

Extreme Make-over

Marimba

Metamorphoses on a Theme by Tchaikovsky
for Wind Orchestra

Johan de Meij

Allegro non troppo

345

Measures 341-345. The score is for a Marimba. Measure 341 starts with a piano (*p*) dynamic. Measures 342-344 continue with the same piano dynamic. Measure 345 starts with a mezzo-forte (*mf*) dynamic. A red bracket is drawn on the left side of measures 341-345. The instruction "Add 2nd player ad lib." is written below measure 345.

Measures 346-351. The score continues with the same piano (*p*) dynamic. Measure 351 ends with a mezzo-forte (*mf*) dynamic. The instruction "[Solo]" is written above measure 352.

Measures 352-357. The score continues with the same piano (*p*) dynamic. Measure 357 ends with a mezzo-forte (*mf*) dynamic.

Measures 358-360. The score continues with the same piano (*p*) dynamic. Measure 360 ends with a mezzo-forte (*mf*) dynamic. The instruction "mp poco rubato (ma non troppo rallentare)" is written below measure 360.

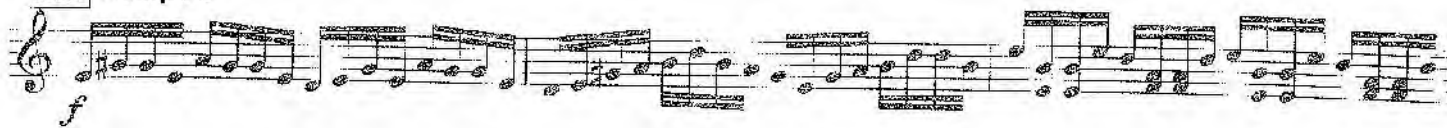
Measures 361-367. The score continues with the same piano (*p*) dynamic. Measure 367 ends with a mezzo-forte (*mf*) dynamic. The instruction "361" is written above measure 361.

Measures 368-370. The score continues with the same piano (*p*) dynamic. Measure 370 ends with a mezzo-forte (*mf*) dynamic. The instruction "369" is written above measure 369.

Measures 371-376. The score continues with the same piano (*p*) dynamic. Measure 376 ends with a mezzo-forte (*mf*) dynamic. The instruction "371 (cresc.)" is written below measure 371.

Measures 377-382. The score continues with the same piano (*p*) dynamic. Measure 382 ends with a mezzo-forte (*mf*) dynamic.

375 Tempo I

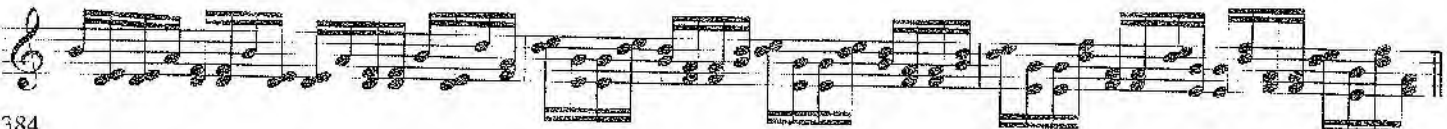


378

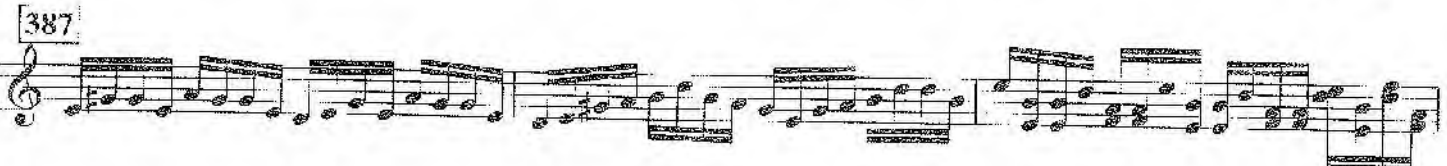
[3]



381



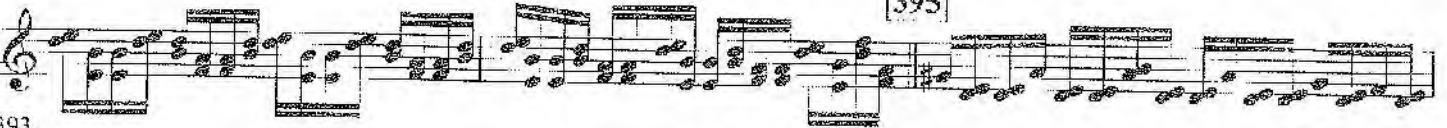
384



390



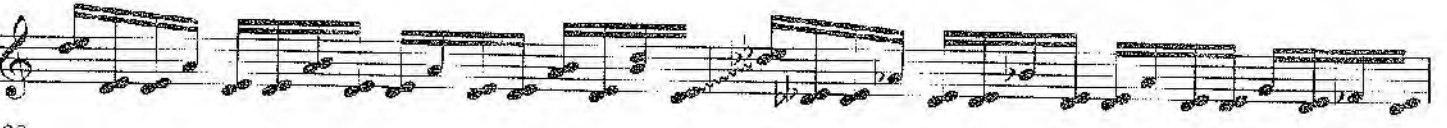
393



396



398



400



402



403 Finale